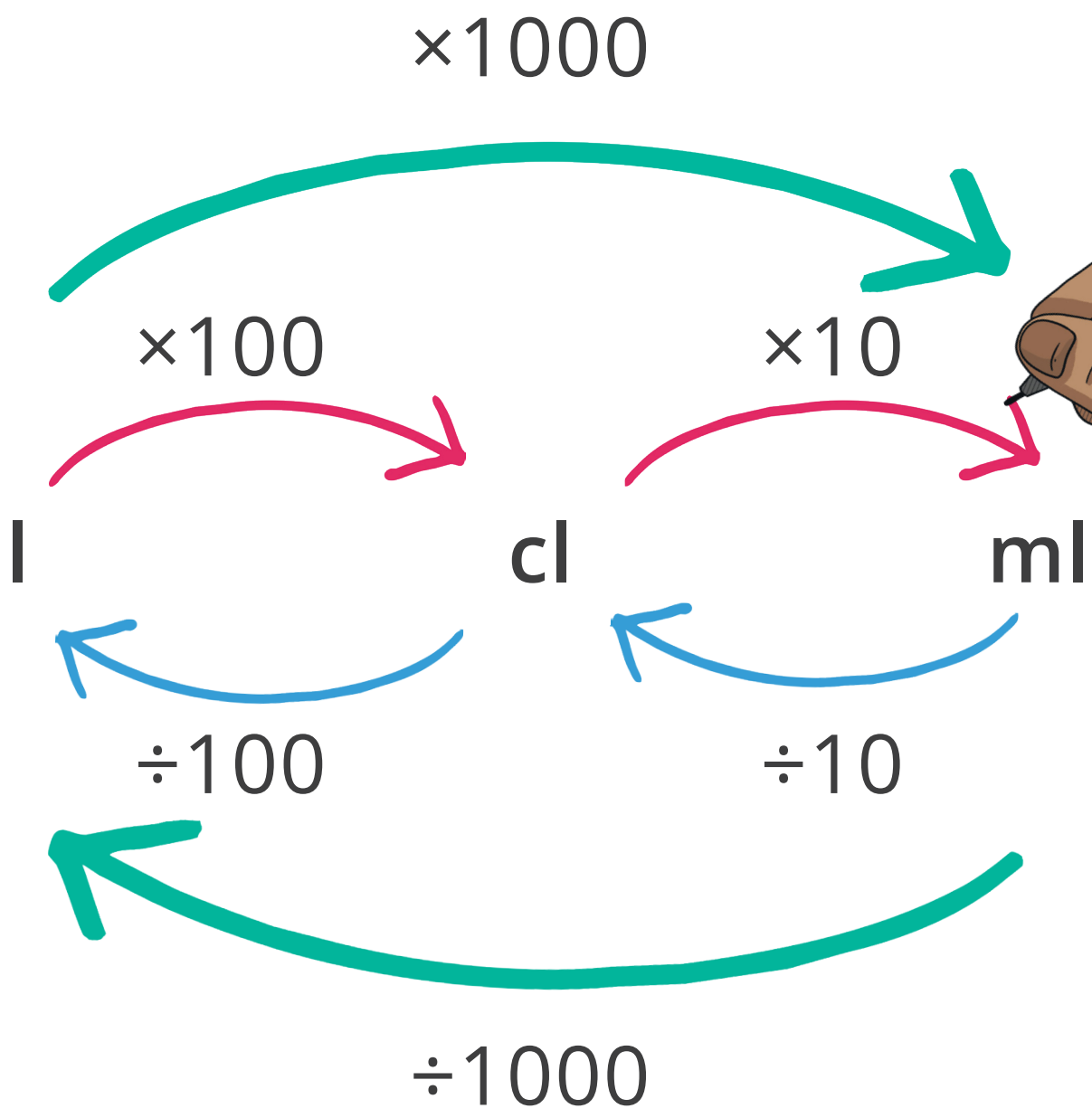
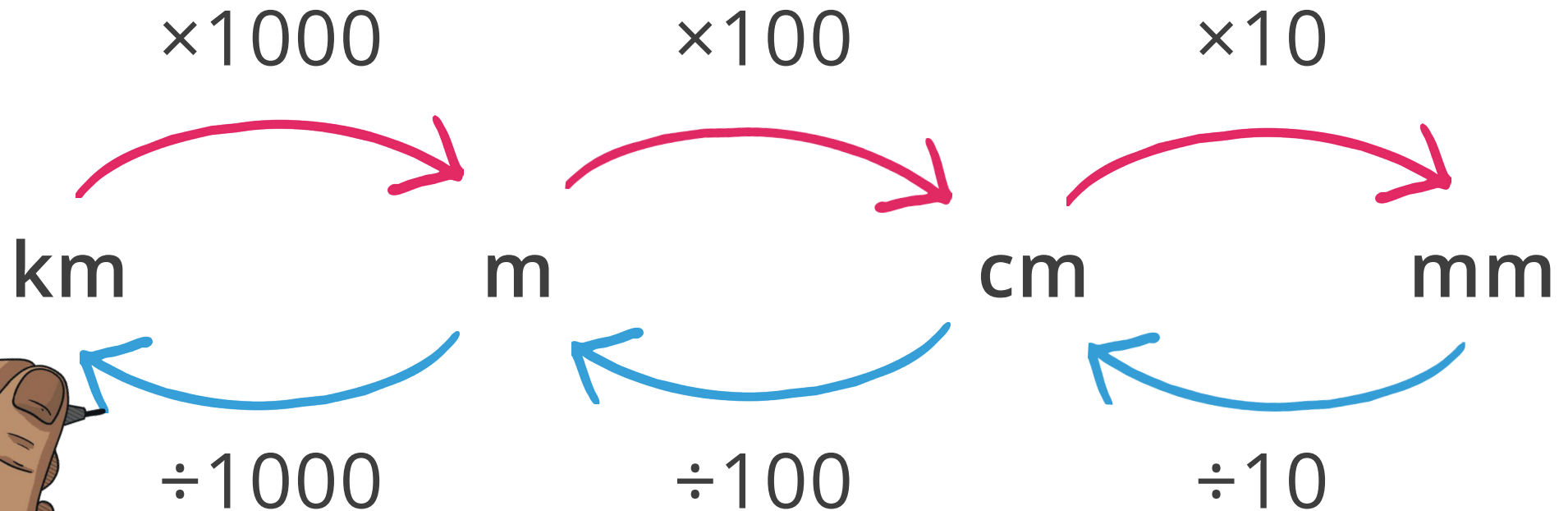


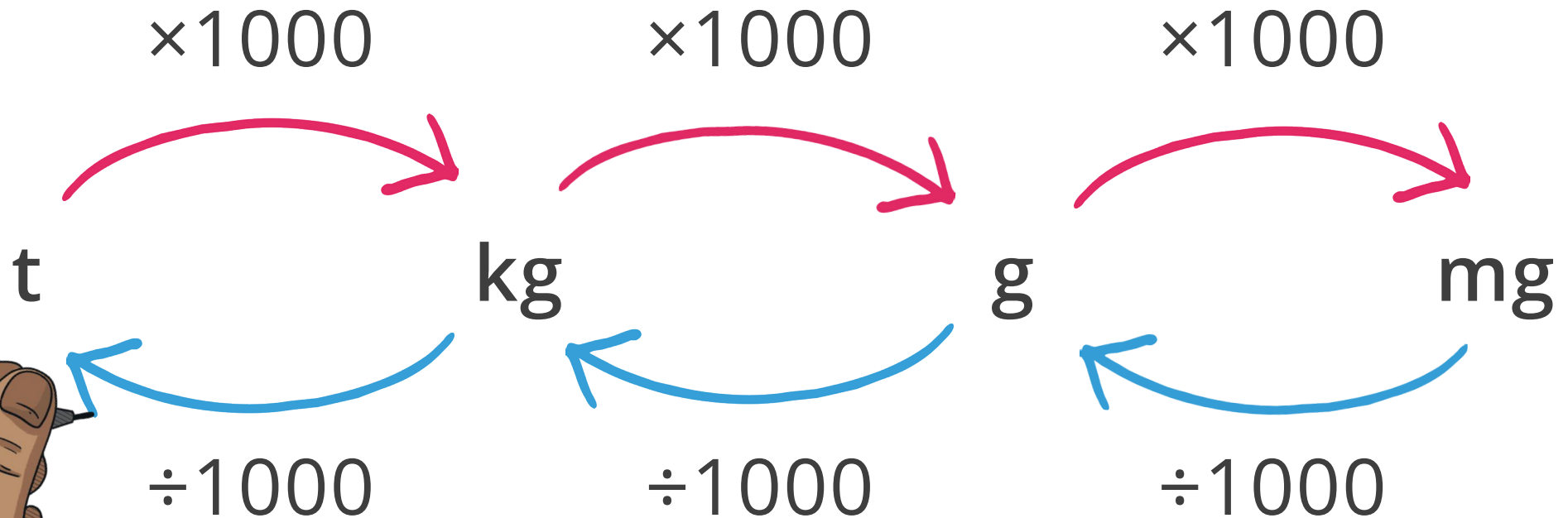
# Converting between Metric Units: **Capacity**



# Converting between Metric Units: Length



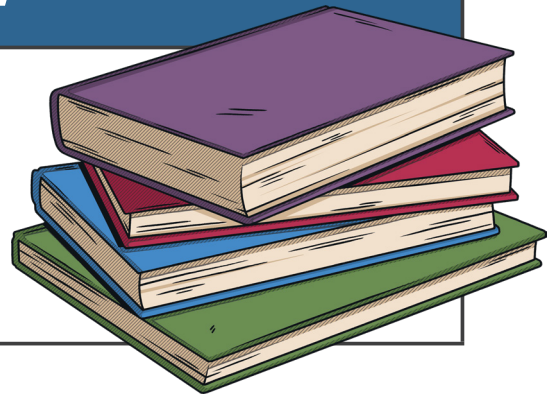
# Converting between Metric Units: Mass



# Metric Units for Capacity

## What You Need To Know

- Centilitre = cl
- Millilitre = ml
- Litre = l



## Key Equivalences

$$1\text{cl} = 10\text{ml}$$

$$10\text{cl} = 100\text{ml}$$

$$100\text{cl} = 1\text{l}$$

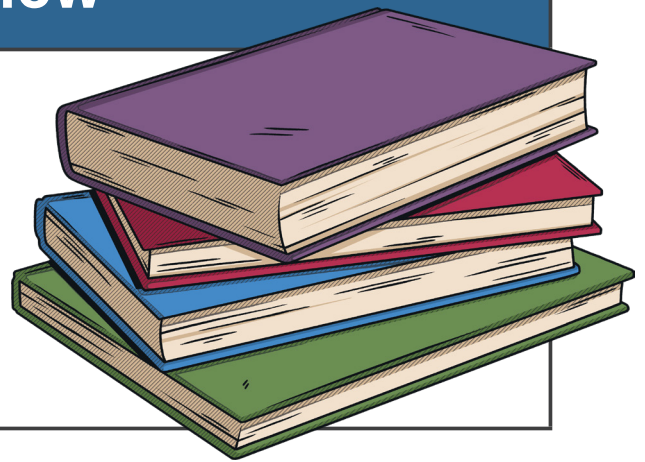
$$1000\text{ml} = 1\text{l}$$



# Metric Units for Length

## What You Need To Know

- Millimetres = mm
- Centimetres = cm
- Metres = m
- Kilometres = km



## Key Equivalences

10mm = 1cm

100mm = 10cm

1000mm = 1m

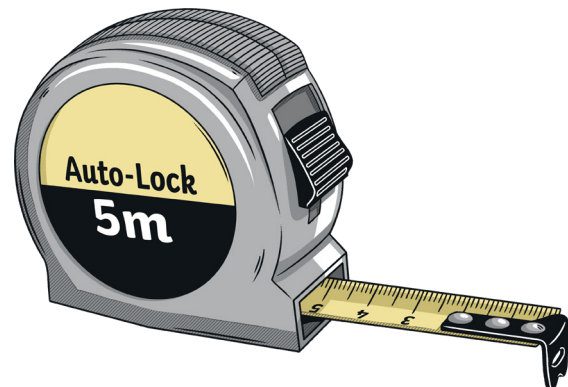
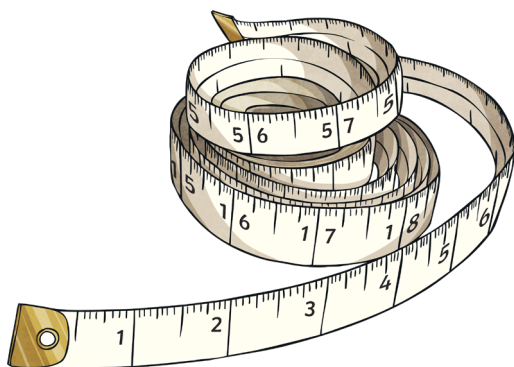
100cm = 1m

1000cm = 10m

100 000cm = 1km

1000m = 1km

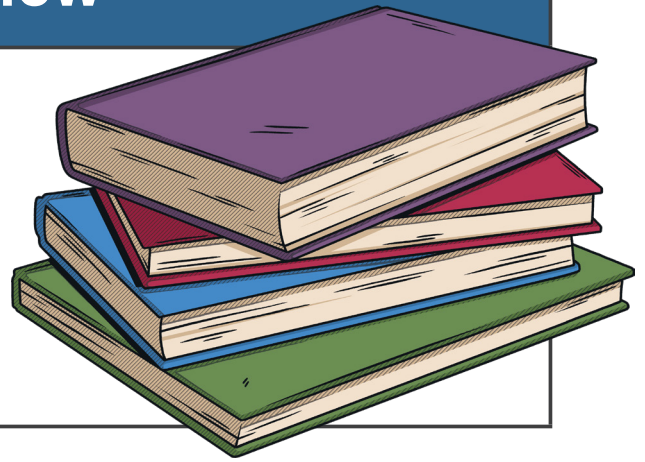
10 000m = 10km



# Metric Units for Mass

## What You Need To Know

- Milligram = mg
- Gram = g
- Kilogram = kg
- Tonne = t



## Key Equivalences

$$1\text{mg} = 0.001\text{g}$$

$$100\text{mg} = 0.1\text{g}$$

$$1000\text{mg} = 1\text{g}$$

$$100\text{g} = 0.1\text{kg}$$

$$1000\text{g} = 1\text{kg}$$

$$1000\text{kg} = 1\text{t}$$

